

# QUOIZEL TIFFANY

## COLLECTIBLES

### Louis Comfort Tiffany

The use of stained glass has been around and admired for more than a 1000 years, where it was most commonly used on cathedrals and churches. However, one of the most famous designers in this field was Louis Comfort Tiffany who also developed lighting products featuring stained and art glass at his famous New York studios.

Tiffany himself had originally trained as an artist and later learnt the craft of glassmaking while working at several glasshouses in the Brooklyn area. After perfecting some of his own techniques for stained glass by making his own opalescent glass utilising the copper foil technique, he founded Tiffany Studios in 1879. At its peak, the then famous and highly successful company employed more than 300 artisans. Tiffany original objects are still highly regarded and collected all over the world.



### Tiffany by Quoizel

Today, the name Tiffany is synonymous with products featuring stained and art glass pieces, copper foiled together, and particularly light fittings that benefit the beauty that the electric light bulb does to these when lit. Quoizel provides a range of looks that capture the Tiffany spirit; from highly traditional and transitional styles to more contemporary interpretations sure to suit any modern-day décor.

Whether you are looking for deep jewel tones and intricate patterns to serve as a statement piece in your home or whether you seek a light, neutral palette that offers the beauty of stained glass as a subtle complement to your room décor, Quoizel has many Tiffany style art glass lamps and lighting fittings that will suit your needs perfectly.



## The Art of making Tiffany style lamps



The skilled artisans trace out the pattern from a template then hand cut the art glass.



Each piece of glass is then ground to fit the shape of the mosaic pattern required.



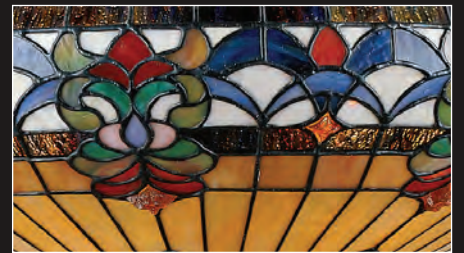
Each piece of art glass is then cleaned and copper foiled.



Flux is then applied to the copper foil and each mosaic piece is put into place within the fibre glass mould.



The shade is then soldered together on the inside with lead free solder, and again on the outside to strengthen construction.



An authentic Bronze patina is applied to the solder, it is then hand waxed to protect the solder from oxidation. It is then polished to give a lustrous finish.

### Exquisite investments of today – cherished heirlooms of tomorrow

Art Glass can be more expensive than crystal glass. All Quoizel Tiffany collectibles are made of Art Glass and the shades in the Elstead collection have between 44 to 632 pieces. The average shade takes 80 hours to create by skilled artisans. Nothing adds colour to a room quite like Tiffany lighting.

### Taking care of Quoizel Tiffany

Never use chemicals to clean your art glass. Use a damp cloth only to remove any excess oil. Use linseed oil on the solder to maintain the lustre after cleaning.



p345	Alahambre
p350	Arden
p341	Belle
p349	Belle Fleur
p344	Chastain
p351	Classic Craftsman
p348	Finton
p351	Harland
p350	Indus
p336-338	Inglenook
p346	Kami
p339	King
p347	Larissa
p351	Lynch
p350	Ruby
p340	Stephen







This Arts and Crafts style features a pyramid shade with a stepped border for added visual interest. The classic geometric design includes art glass in shades of amber, cream and tan, accented with glass pieces in sapphire blue and rich green. The linear geometric details on the base makes it a perfect complement to the shade.



QZ/INGLENOOK/ISLE  
 496 pieces of glass



QZ/INGLENOOK/SF  
 248 pieces of glass



QZ/INGLENOOK/TL  
 248 pieces of glass



QZ/INGLENOOK/WU  
 110 pieces of glass



QZ/INGLENOOK/FL  
 248 pieces of glass

Code	Description	Height	Width	Min. Drop	Max. Drop	Projection	Finish	Max Wattage
QZ/INGLENOOK/ISLE	3lt Island Chandelier	445mm	1207mm	546mm	1990mm*	406mm	Valiant Bronze	3 × 100W E27
QZ/INGLENOOK/FL	Floor Lamp	1575mm	432mm	-	-	-	Valiant Bronze	2 × 60W E27
QZ/INGLENOOK/SF	Semi-Flush	203mm	356mm	-	-	-	Valiant Bronze	2 × 60W E27
QZ/INGLENOOK/TL	Table Lamp	635mm	406mm	-	-	-	Valiant Bronze	2 × 60W E27
QZ/INGLENOOK/WU	2lt Wall Uplighter	178mm	406mm	-	-	140mm	-	2 × 60W E14

\* Supplied with 1500mm of chain.



QZ/INGLENOOK/P/B  
248 pieces of glass



QZ/INGLENOOK/MP  
208 pieces of glass



QZ/INGLENOOK/P/A  
248 pieces of glass

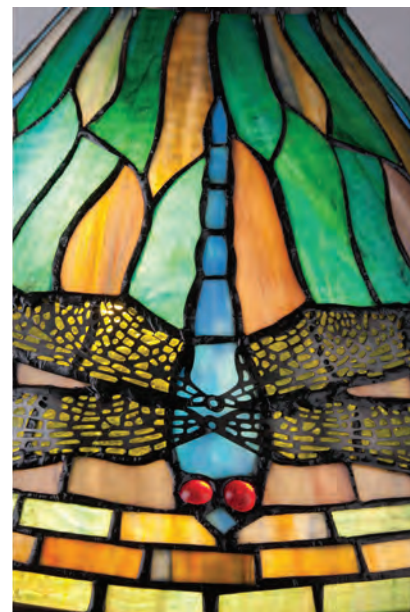
Code	Description	Height	Width	Min. Drop	Max. Drop	Finish	Max Wattage
QZ/INGLENOOK/MP	Mini Pendant	178mm	203mm	279mm	1179mm* <sup>1</sup>	Valiant Bronze	1 × 100W E27
QZ/INGLENOOK/P/A	Pendant	318mm	432mm	419mm	1880mm* <sup>2</sup>	Valiant Bronze	3 × 60W E27
QZ/INGLENOOK/P/B	Pendant	648mm	445mm	749mm	2210mm* <sup>2</sup>	Valiant Bronze	3 × 100W E27

\*<sup>1</sup> Supplied with 2 × 150mm & 2 × 300mm rods. \*<sup>2</sup> Supplied with 1500mm of chain.

The King design is faithful to the original Dragonfly design created by Louis Comfort Tiffany more than 100 years ago. Hand crafted, these lamps will look stunning in any classic setting.



QZ/KING/FL  
318 pieces of glass



King Detail



QZ/KING/TL  
318 pieces of glass

Code	Description	Height	Width	Projection	Finish	Max Wattage
QZ/KING/FL	Floor Lamp	1575mm	457mm	-	Vintage Bronze	2 x 100W E27
QZ/KING/TL	Table Lamp	610mm	406mm	-	Vintage Bronze	2 x 60W E27



# STEPHEN

This hand-crafted Tiffany style collection illuminates your home with warm shades of amber, bisque and earthy green, arranged in a clean and simple geometric pattern reminiscent of the works of Frank Lloyd Wright. The sturdy base complements the Arts & Crafts style, and is finished in a Vintage Bronze.



QZ/STEPHEN/TL  
248 pieces of glass



QZ/STEPHEN/MP  
152 pieces of glass



QZ/STEPHEN1  
152 pieces of glass



QZ/STEPHEN/3P  
256 pieces of glass

Code	Description	Height	Width	Min. Drop	Max. Drop	Projection	Finish	Max Wattage
QZ/STEPHEN1	1lt Wall Light	254mm	203mm	-	-	267mm	Vintage Bronze	1 x 100W E27
QZ/STEPHEN/3P	3lt Pendant	254mm	457mm	381mm	1820mm*1	-	Vintage Bronze	3 x 60W E27
QZ/STEPHEN/MP	Mini Pendant	152mm	203mm	254mm	1168mm*2	-	Vintage Bronze	1 x 100W E27
QZ/STEPHEN/TL	Table Lamp	584mm	406mm	-	-	-	Vintage Bronze	2 x 60W E27

\*1 Supplied with 1500mm of chain. \*2 Supplied with 2 x 150mm & 2 x 300mm rods.

Gentle scrollwork and classic Tiffany-style shades in classic patterns and colours bring sophistication to the Asheville collection. The Valiant Bronze finish anchors the traditional styling. The art glass that the shades are comprised are hand-assembled using the copper foil method developed by Louis Comfort Tiffany.



QZ/ASHEVILLE3  
each shade contains  
44 pieces of glass



QZ/ASHEVILLE/SF  
44 pieces of glass



QZ/ASHEVILLE/TL  
44 pieces of glass

Code	Description	Height	Width	Min. Drop	Max. Drop	Finish	Max Wattage
QZ/ASHEVILLE3	3lt Chandelier	572mm	584mm	673mm	2140mm*	Valiant Bronze	3 × 60W E27
QZ/ASHEVILLE/SF	Semi-Flush	305mm	356mm	-	-	Valiant Bronze	2 × 100W E27
QZ/ASHEVILLE/TL	Table Lamp	635mm	406mm	-	-	Valiant Bronze	2 × 60W E27

\* Supplied with 1500mm of chain.





## BELLE FLEUR

The elegant Belle Fleur design feature over 500 individual pieces of hand cut art glass for the table lamps and more than 600 on the pendant, which also features glass beads in its chain.



QZ/BELLEFLEUR/P  
605 pieces of glass



QZ/BELLEFLEUR/TL  
504 pieces of glass

Code	Description	Height	Width	Min. Drop	Max. Drop	Finish	Max Wattage
QZ/BELLEFLEUR/P	Pendant	711mm	578mm	787mm	2290mm*	Vintage Bronze	4 x 100W E27
QZ/BELLEFLEUR/TL	Table Lamp	686mm	457mm	-	-	Vintage Bronze	2 x 60W E27

\* Supplied with 1500mm of chain.



# CHASTAIN

The Chastain pays homage to the enduring Arts and Crafts style, which is typified by straight lines forming squares and rectangles. The hand-crafted shade honours the tradition of quality and attention to detail, and the coordinating base has an authentic Vintage Bronze patina.



QZ/CHASTAIN/P  
160 pieces of glass



QZ/CHASTAIN/TL  
140 pieces of glass

Code	Description	Height	Width	Min. Drop	Max. Drop	Finish	Max Wattage
QZ/CHASTAIN/P	Pendant	305mm	495mm	419mm	2857mm*	Vintage Bronze	3 x 60W E27
QZ/CHASTAIN/TL	Table Lamp	572mm	394mm		-	Vintage Bronze	2 x 60W E27

\* Supplied with 1500mm of chain.

## ALAHAMBRE

The softly arched brass wire arms suspended over cream-coloured opalescent glass with wine accents gives this cone-shaped shade the illusion of being dome-shaped. Clear, granite-textured glass connects all the elements giving a multi-dimensional, web-like feel.



QZ/ALAHAMBRE/P  
128 pieces of glass



QZ/ALAHAMBRE/TL  
96 pieces of glass

Code	Description	Height	Width	Min. Drop	Max. Drop	Finish	Max Wattage
QZ/ALAHAMBRE/P	Pendant	635mm	559mm	724mm	2200mm*	Vintage Bronze	4 x 100W E27
QZ/ALAHAMBRE/TL	Table Lamp	711mm	457mm	-	-	Vintage Bronze	2 x 60W E27

\*Supplied with 1500mm of chain.



# KAMI

This lovely Tiffany style collection features a hand-crafted, genuine art glass shade created in hues of amber, caramel, ginger and emerald. The glass is arranged in a classic Art Nouveau pattern. The warm colour palette creates a harmonious balance of light, and the complementary base is finished in a Vintage Bronze.

QUOIZEL TIFFANY  
COLLECTIBLES



QZ/KAMI/P  
360 pieces of glass



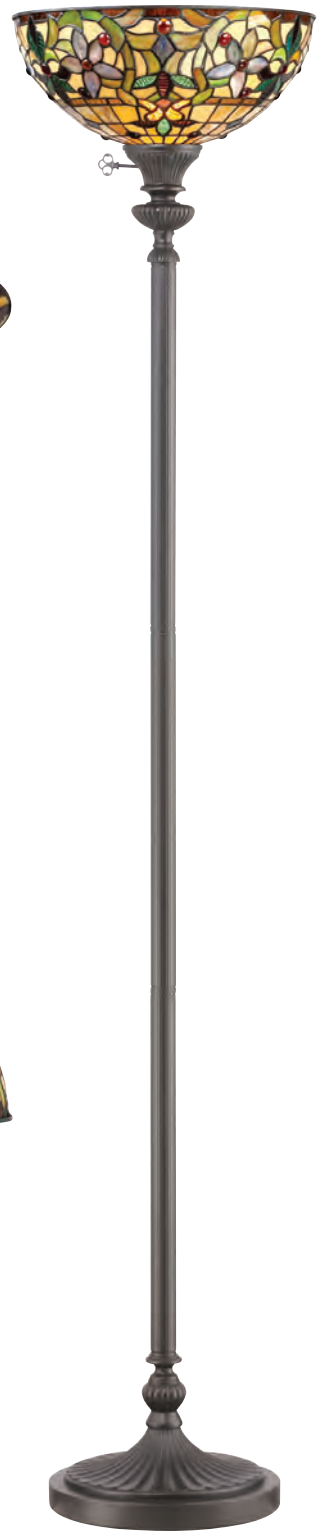
QZ/KAMI/F  
367 pieces of glass



QZ/KAMI/WU  
112 pieces of glass



QZ/KAMI/TL  
366 pieces of glass



QZ/KAMI/UL  
366 pieces of glass

Code	Description	Height	Width	Min. Drop	Max. Drop	Projection	Finish	Max Wattage
QZ/KAMI/F	Flush Mount	152mm	432mm			-	Vintage Bronze	2 x 60W E27
QZ/KAMI/P	Pendant	267mm	508mm	394mm	2100mm*	-	Vintage Bronze	3 x 60W E27
QZ/KAMI/TL	Table Lamp	584mm	406mm			-	Vintage Bronze	2 x 60W E27
QZ/KAMI/UL	Uplighter	1778mm	356mm			-	Vintage Bronze	1 x 100W E27
QZ/KAMI/WU	Wall Uplighter	178mm	368mm			140mm	Vintage Bronze	2 x 60W E14

\* Supplied with 1500mm of chain.

This beautiful Tiffany style collection features a handcrafted, genuine art glass shade created in rich jewel tones as well as soft pastels. The glass is arranged in a classic Art Nouveau pattern. The warm colour palette creates a harmonious balance of light, and the complementary base is finished in a Vintage Bronze.



QZ/LARISSA/FL  
 426 pieces of glass



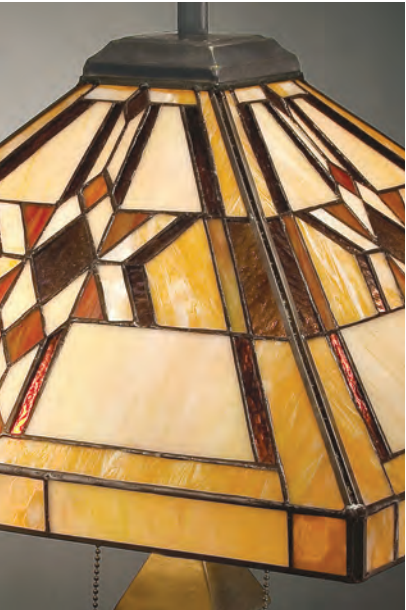
QZ/LARISSA/TL  
 426 pieces of glass

Code	Description	Height	Width	Projection	Finish	Max Wattage
QZ/LARISSA/FL	Floor Lamp	1575mm	457mm	-	Vintage Bronze	2 x 100W E27
QZ/LARISSA/TL	Table Lamp	584mm	406mm	-	Vintage Bronze	2 x 60W E27



# FINTON

This classic American Mission style collection features warm colour tones of amber, brown and buttery yellow, creating an inviting appeal. The Vintage Bronze finish authenticates the historic design.



Finton Detail



QZ/FINTON/FL  
232 pieces of glass



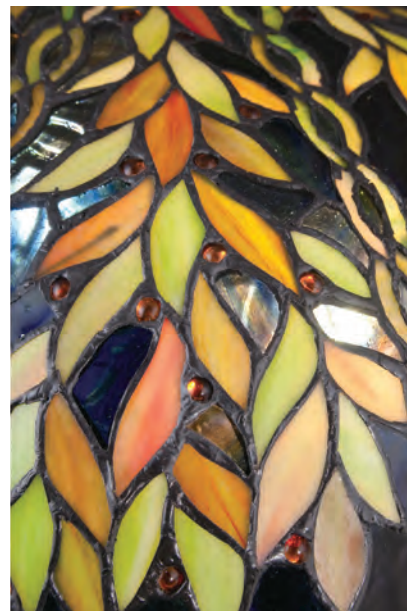
QZ/FINTON/TL  
232 pieces of glass

Code	Description	Height	Width	Projection	Finish	Max Wattage
QZ/FINTON/FL	Floor Lamp	1575mm	432mm	-	Vintage Bronze	2 x 60W E27
QZ/FINTON/TL	Table Lamp	635mm	406mm	-	Vintage Bronze	2 x 60W E27

The forest and lush greens used on this organic motif enhances the intricate leaf pattern used on the shade and base. Belle is a perfect blend of natural elegance and traditional appeal. The shade contains 632 art glass pieces that are hand-assembled using the copper-foil technique developed by Louis Comfort Tiffany. The beautiful Imperial Bronze base is captivating with its delicate and open style. It is sure to enhance any rooms' décor.



QZ/BELLE/FL  
 632 pieces of glass



Belle Detail



QZ/BELLE/TL  
 632 pieces of glass

Code	Description	Height	Width	Projection	Finish	Max Wattage
QZ/BELLE/FL	Floor Lamp	1486mm	457mm	-	Imperial Bronze	2 x 100W E27
QZ/BELLE/TL	Table Lamp	648mm	432mm	-	Imperial Bronze	2 x 60W E27



# TIFFANY STYLE TABLE LAMPS

These beautiful individual table lamps from the Quoizel Tiffany collection are diverse in base and shade style, offering timeless classics to fit your interior design.



ARDEN  
QZ/ARDEN/TL

Arden has a classic Bronze base with amber, copper and pale green art glass.  
192 pieces of glass



INDUS  
QZ/INDUS/TL

Indus has very intricate Vintage Bronze metalwork to adorn the amber glass shade.  
120 pieces of glass



RUBY  
QZ/RUBY/TL

Ruby features the classic Charles Rennie Mackintosh rose motif on this minimalistic shade.  
312 pieces of glass

Code	Description	Height	Width	Projection	Finish	Max Wattage
QZ/ARDEN/TL	Table Lamp	597mm	406mm	-	Bronze Patina	2 x 60W E27
QZ/INDUS/TL	Table Lamp	584mm	406mm	-	Vintage Bronze	2 x 60W E27
QZ/RUBY/TL	Table Lamp	648mm	406mm	-	Vintage Black	2 x 60W E27



### LYNCH

QZ/LYNCH/TL

Lynch has deep blue glass jewels amongst the peacock green and blue coloured art glass shade.

371 pieces of glass



### CLASSIC CRAFTSMAN

QZ/CLASSICCRF/TL

Classic Craftsman features wonderful red wine tones in a very intricate colourful geometric design.

474 pieces of glass



### HARLAND

QZ/HARLAND/TL

Harland has a welcoming warm glow from the amber panels and features a classic Vintage Black base.

280 pieces of glass

Code	Description	Height	Width	Projection	Finish	Max Wattage
QZ/CLASSICCRF/TL	Table Lamp	737mm	432mm	-	Valliant Bronze	2 x 60W E27
QZ/HARLAND/TL	Table Lamp	648mm	406mm	-	Vintage Black	2 x 60W E27
QZ/LYNCH/TL	Desk Lamp	660mm	394mm	-	Bronze	2 x 60W E27